

- Price Guide -

Media choices:

- Epson Premium Matte Canvas
- Epson Somerset Velvet Watercolor Paper
- Epson Ultra Smooth Fine Art paper

(prices based on \$15.00 s/f)

SIZE	BORDERLESS	WITH 2" BORDERS
8x10	\$8.40	\$17.55
11x14	\$16.05	\$28.20
16x20	\$33.30	\$49.95
20x24	\$49.95	\$70.05
24x30	\$75.00	\$99.15
24x36	\$90.00	\$116.70
30x40	\$124.95	\$155.85
36x48	\$180.00	\$216.60
Glossy Varnish Additional 20% of Print Price		
Ask about quantity discounts!		

- ** print prices do not include scan or any additional artwork needed to original.
- ** color correction is included on all prints. we promise the closest possible match to your original!
- ** round odd sizes to the next highest size.
- ** **Severn Graphics highly recommends clients view a proof of their art reproduction project before printing at final size.**

- More Options -

Additional 8x10 proof	\$8.40
Additional CD	\$10.00
Retouching/Cleanup	\$75.00/per hr.
Computer Design	\$75.00/per hr.

*Don't forget! Severn Graphics can take care of **all** your custom framing needs! We can complete your project from scan to frame **IN HOUSE!***

- Art Reproduction Scans -

Our scan prices include an 8x10 proof!

- All scans are 300dpi at original size
- Files are saved in TIFF format
- Adobe 1998 RGB color profile
- All scans include 1 cd with color corrected file.

up to 11x17	\$50.00
16x20	\$70.00
18x24	\$93.00
20x24	\$105.00
20x30	\$130.00
24x30	\$155.00
24x36	\$180.00
30x40	\$255.00
<i>Any original larger than 30x40 may be subject to multiple scan charges and artwork.</i>	

If you are providing digital files, please set up as follows:

- All files should be in Tiff format
- Save files in Adobe RGB 1998 color space
- Optimal file size for 11x14 and under is 400dpi
- Optimal file size for over 11x14 is between 200 and 300dpi

Severn Graphics will archive all scans done for our clients unless directed otherwise. Our goal is to make your "Giclée" experience as easy as possible. Re-orders of giclée prints from archived scans are just a phone call or email away!

For additional information contact:

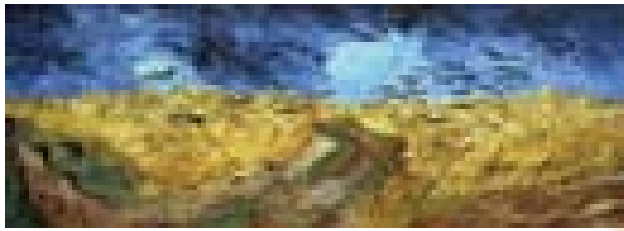
SALES : Jim Hartman - jamesh@sevgraph.com
TECH : Colleen Dugan - colleend@sevgraph.com

SEVERN GRAPHICS
 Your Visual Communications Company

Presents
Giclée
 The Standard In Art Reproduction

7590 Ritchie Highway • Glen Burnie, MD 21061
 410.768.6118 800.825.9134
 www.severngraphics.com

PCAMA
 AWARD WINNER
 2008



Presenting Giclee: The New Standard

In French, Giclee means “to spray ink through a nozzle.” It should mean, “quality, accuracy and vividness never available before.” Giclee printing (and associated high-end scanning/computer image manipulation) opens entirely new resale possibilities to fine artists, photographers and distributors. Resulting prints are suitable for galleries, art shows and other distinguished establishments and can confidently be called a master reproduction of the artist’s original. With proper care and display methods these reproductions will show no signs of fading or breakdown for decades.

The Process: Severn Graphics’ Style

Requisite to successful Giclee output are a modern, reputable production system, skilled technicians and excellent communications between you and Severn Graphics. All are important pieces of the total system as the prints desired are the best that can be produced, expected to last for decades and please even the most finicky judge of print quality.



Scanning

Whether the original is flat art, exotic material or photographic negatives and slides, Severn Graphics has a scanning service that can provide the resolution needed for top quality reproductions. The implementation of Giclée has allowed us to utilize all the power our Scitex scanner has to offer. We guarantee this device will provide you with the sharpness and color range needed for amazing reproductions.

Pieces too large for the Scitex are scanned in a state of the art digital copy studio to ultra high-resolution files. A solid copy stand and cool fluorescent lights optimize the digital quality of your original pieces, whether they are photographs, posters or any manner of paintings. High-gloss oils, pastels or rigid surfaces are no problem for this system.

Tweaking

Scanned files are given a thorough optimization via our most powerful Apple computers and the latest Photoshop programs. Files are tweaked and adjusted for any inconsistencies and readied for the specific printing substrate, as well as copied for both our and the your archives. Throughout the process, modern color profiling and calibration systems are utilized so that the client can later order prints that are a exact match to previous prints. If on inspection sample prints are found lacking of quality by either Severn technicians or you, they will be re-scanned.

Printing

Our Epson wide format printer, utilizing UltraChrome K3 8-color pigment inks, is considered the new standard bearer for Giclee printing industry wide. The Epson prints on an inexhaustible variety of media up to 44 inches wide by any length and with inks producing the widest color gamut yet available. Several fine art papers that duplicate the painter’s media or give photographs a distinctly textured quality are available. Prints can also be varnished to further bring out the texture and increase the longevity of the print, especially if it is not framed under glass.

Until the K3 ink system, black and white reproduction has been a major stumbling block for inkjet printers. This machine utilizes three shades of black ink. There is virtually no color-casting, bronzing or metamerism on these prints. Fine details and shifts of density and tone are brought out like never before.

Our Customer Service Goal

Customer satisfaction drives Severn Graphics and fuels our job fulfillment and nurtures long-lasting company-client relationships. The Giclee system is an exciting new avenue through which we are confident that we can build mutually beneficial business relationships with highly demanding clients in all artistic fields throughout the region and beyond. We achieve that, one print at a time, using your standards as our benchmark.

